



GRAPHIC DESIGN

Business Division

2021-2022

Monroe County Community College's associate of applied science degree in graphic design enables students to obtain a broad introduction to the concepts and techniques used in the field of graphic design. The associate of applied science degree has three concentrations: digital media and illustration. Students in the digital media concentration will explore the fundamentals of design, creation of graphical assets, publication design, three-dimensional design and time-based media using industry-standard software. Students in the illustration concentration will explore the digital media concepts with a focus on art history and traditional art fundamentals.

Career Opportunities

Students may work as graphic designers, desktop publishers, pre-press technicians, commercial artists, entry-level Web designers and multimedia artists.

Transfer Information

For information regarding transfer opportunities for this or any program, please visit the Transfer section of the MCCC website.



Note: The following codes identify courses that satisfy MCCC's General Education Requirements:

- (C1) GE Natural Sciences Competency
- (C2) GE Mathematics Competency
- (C3) GE Writing Competency
- (C4) GE Computer Literacy Competency
- (C5) GE Human Experience Competency
- (C6) GE Social Systems Competency



Credits

| Required General Education Courses | | 19-20 |
|---|--|--------------|
| C1 | Natural Science Competency | 4 |
| C2 | Mathematics Competency | 3 or 4 |
| C3 | ENGL 151 (English Composition I) | 3 |
| C4 | CIS 130 (Introduction to Computer Information Systems) | 3 |
| C5 | Expressions of the Human Experience Competency . . . | 3 |
| C6 | Social Systems Competency | 3 |

See the General Education Requirements on the MCCC website for a list of courses that satisfy the General Education Learning Competencies.

| Required Core Courses | | 16 |
|------------------------------|---|-----------|
| ART 151 | (Art Fundamentals) | 3 |
| ART 160 | (Two Dimensional Design) | 3 |
| CIS 130 | (Introduction to Computer Information Systems) . . C4 | 4 |
| CIS 178 | (Design Concepts) | 4 |
| CIS 182 | (Illustrator Graphics) | 3 |
| CIS 184 | (Photoshop Graphics) | 3 |

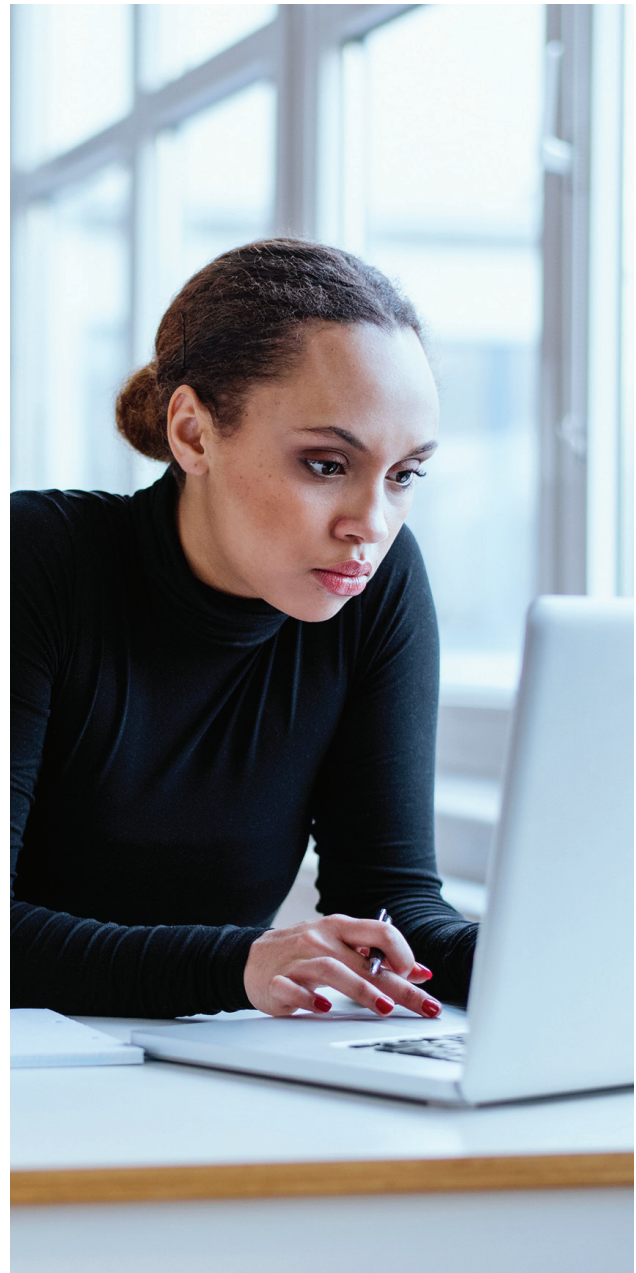
Choose one of the following concentrations:

| | Credits |
|--|----------------|
| Digital Media Concentration | 25 |
| CIS 186 (Multimedia Development) | 3 |
| CIS 187 (Digital Video Editing) | 3 |
| CIS 188 (InDesign Desktop Publishing) | 3 |
| CIS 189 (3D Animation) | 3 |
| CIS 277 (User Interface Design) | 3 |
| CIS 279 (Designing for Digital Environments) | 3 |
| CIS 284 (Advanced Photoshop Graphics) | 3 |
| General Electives | 4 |

OR

| | |
|---|-----------|
| Illustration Concentration | 25 |
| ART 165 (Illustration Techniques) | 3 |
| ART 170 (Life Drawing) | 3 |
| ART 180 (Drawing I) | 3 |
| ART 181 (Drawing II) | 3 |
| ART 280 (Art History: Prehistoric to Gothic) or ART 281 (Art History: Renaissance to Baroque) or ART 282 (Art History: Neo-Classical to Early Modern) . . | C5 |
| HUMAN 152 (Exploring Creativity) | 3 |
| CIS/ART Electives | 6 |
| General Electives | 4 |

Total Degree Requirements 60-61 credits
Total Degree Cost 69 minimum billable contact hours



Information contained within this document is subject to change. This program sheet may not be considered as an agreement or contract.

Monroe County Community College is an equal opportunity institution and adheres to a policy that no qualified person shall be discriminated against because of race, color, religion, national origin or ancestry, age, gender, marital status, disability, genetic information, sexual orientation, gender identity/expression, height, weight or veteran's status in any program or activity for which it is responsible. If you have a disability and need special accommodations, please contact the Student Success Center (734.384.4167) at least 10 business days prior to the first class session to begin the accommodation process.

The college's Equal Opportunity Officer and Title IX and Section 504/ADA Coordinator and Compliance Officer for discrimination and sexual harassment is the Director of Human Resources, Monroe County Community College, 1555 South Raisinville Road, Monroe, Michigan 48161, 734.384.4245.

Monroe County Community College is accredited by the Higher Learning Commission, www.hlcommission.org, 800.621.7440.

Main Campus
1555 South Raisinville Road
Monroe, Michigan 48161
734-242-7300 / 1-877-YES-MCCC

Whitman Center
7777 Lewis Avenue
Temperance, Michigan 48182
734-847-0559



www.monroecc.edu | Admissions: 734-384-4104